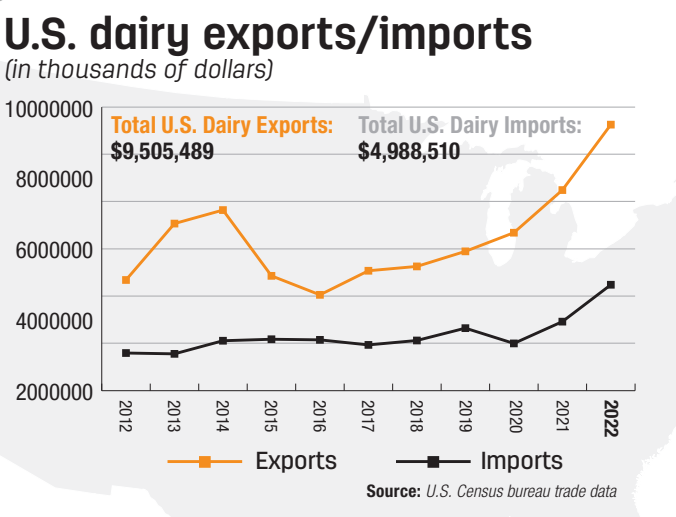


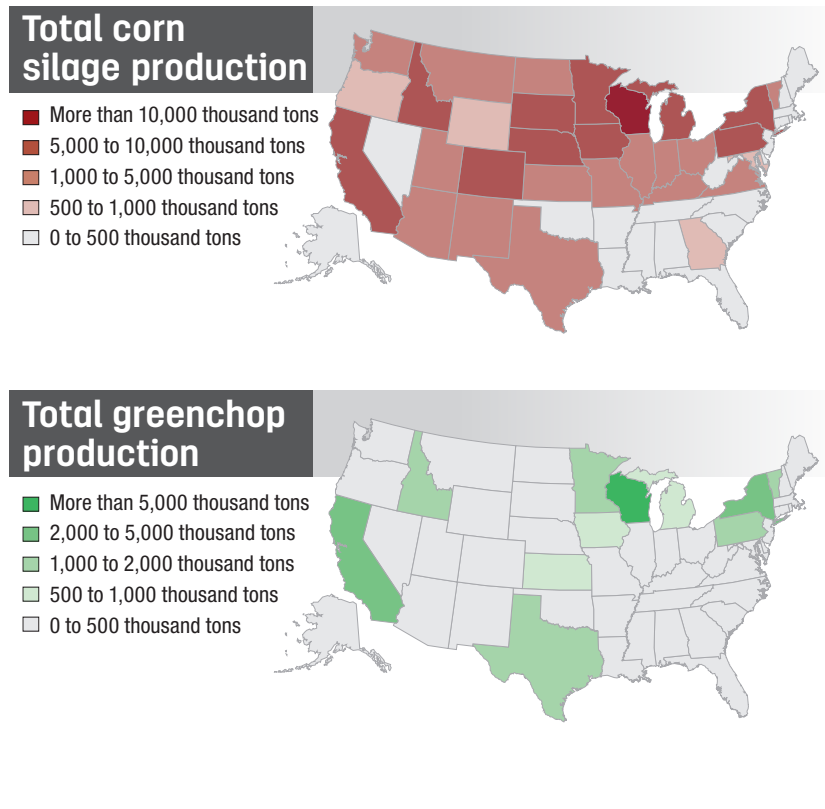
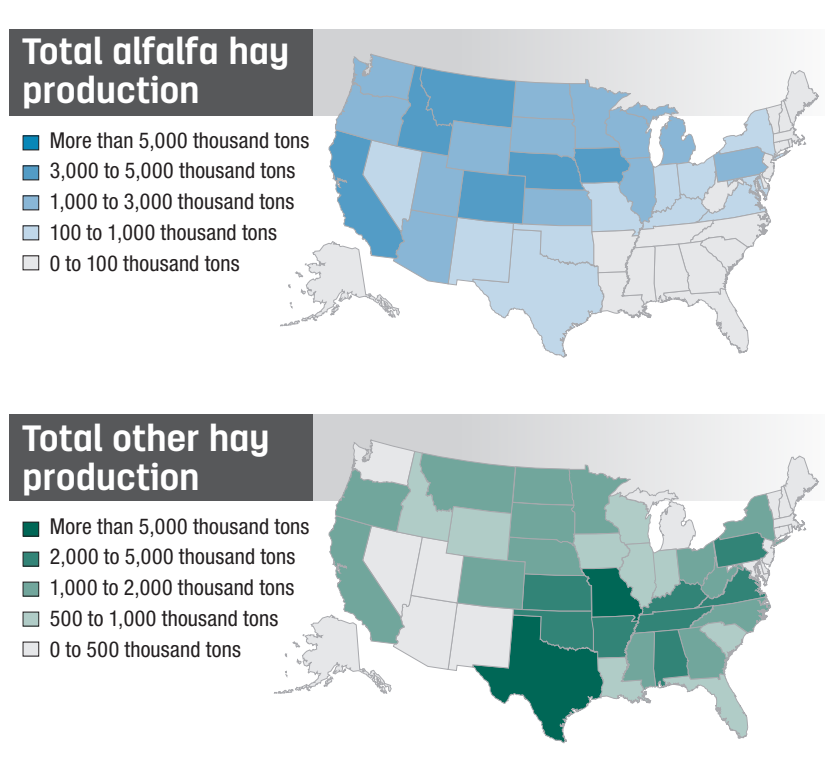
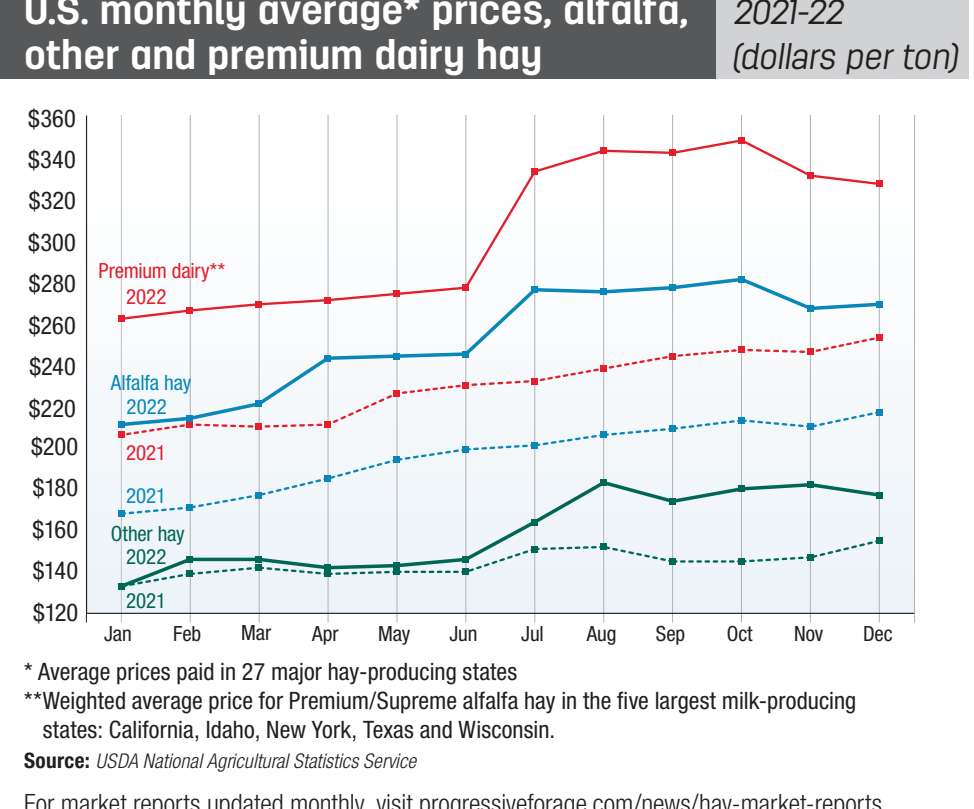
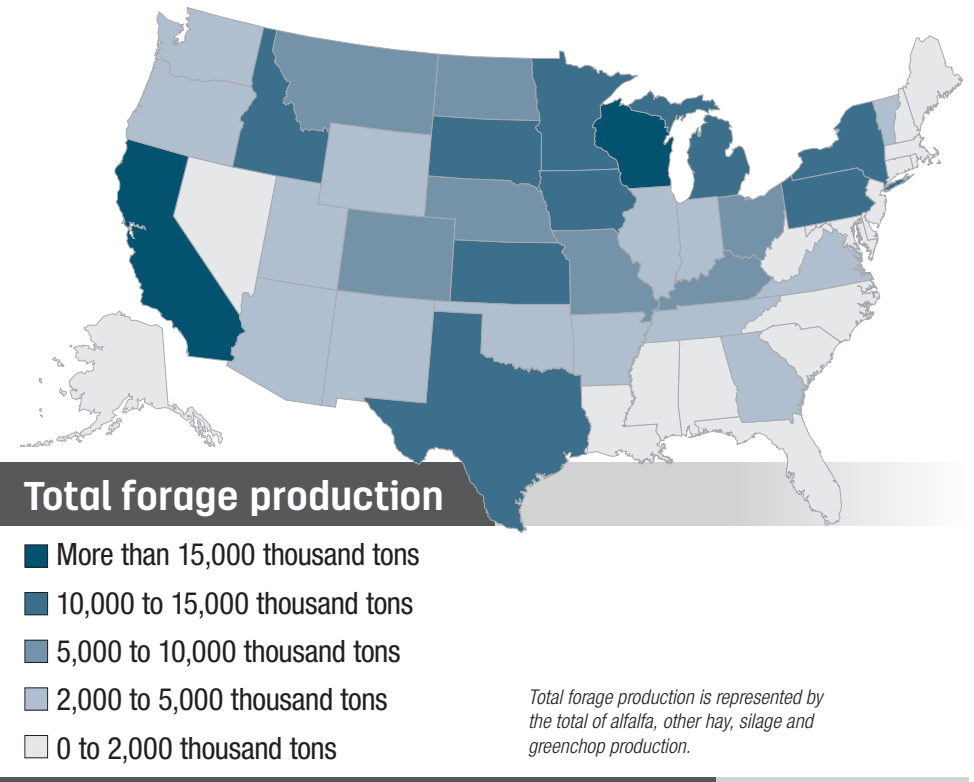
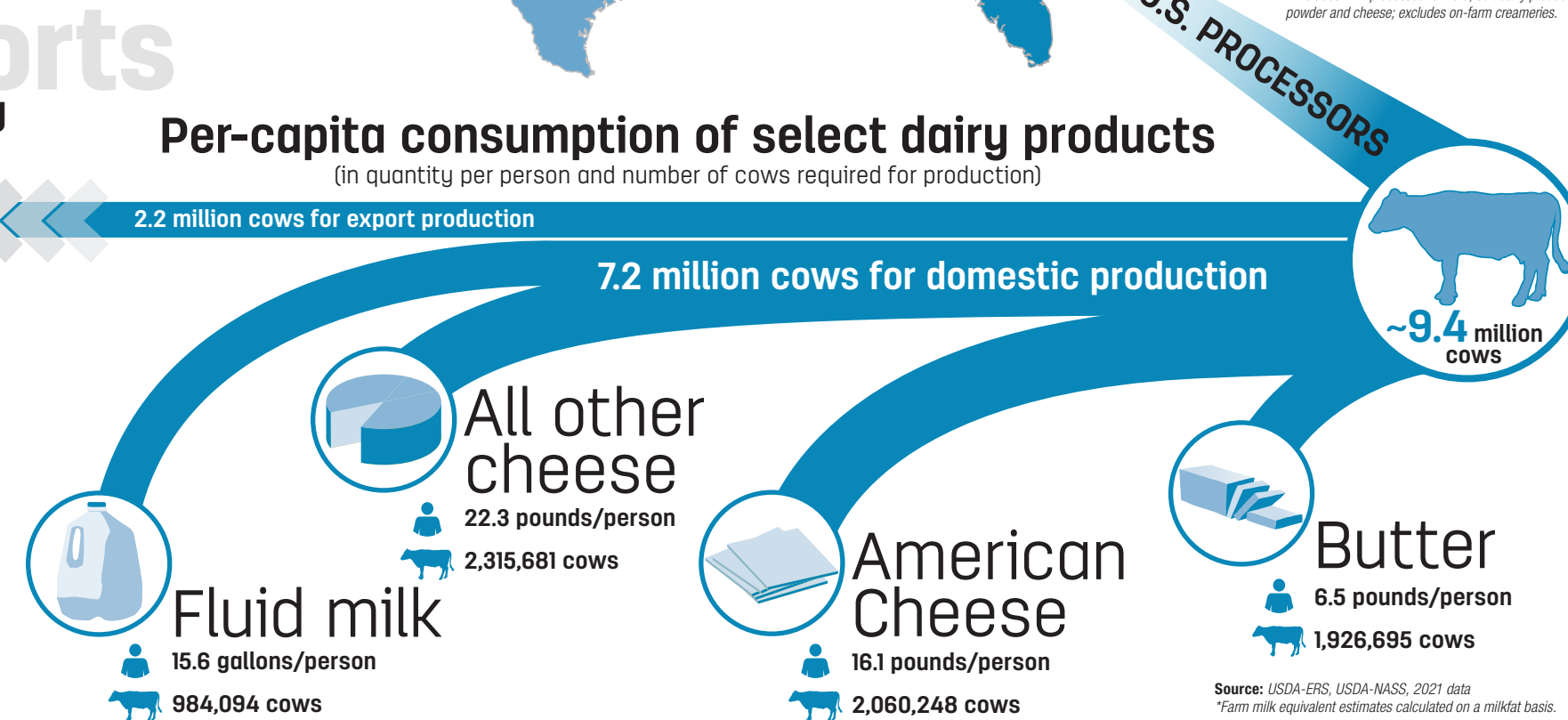
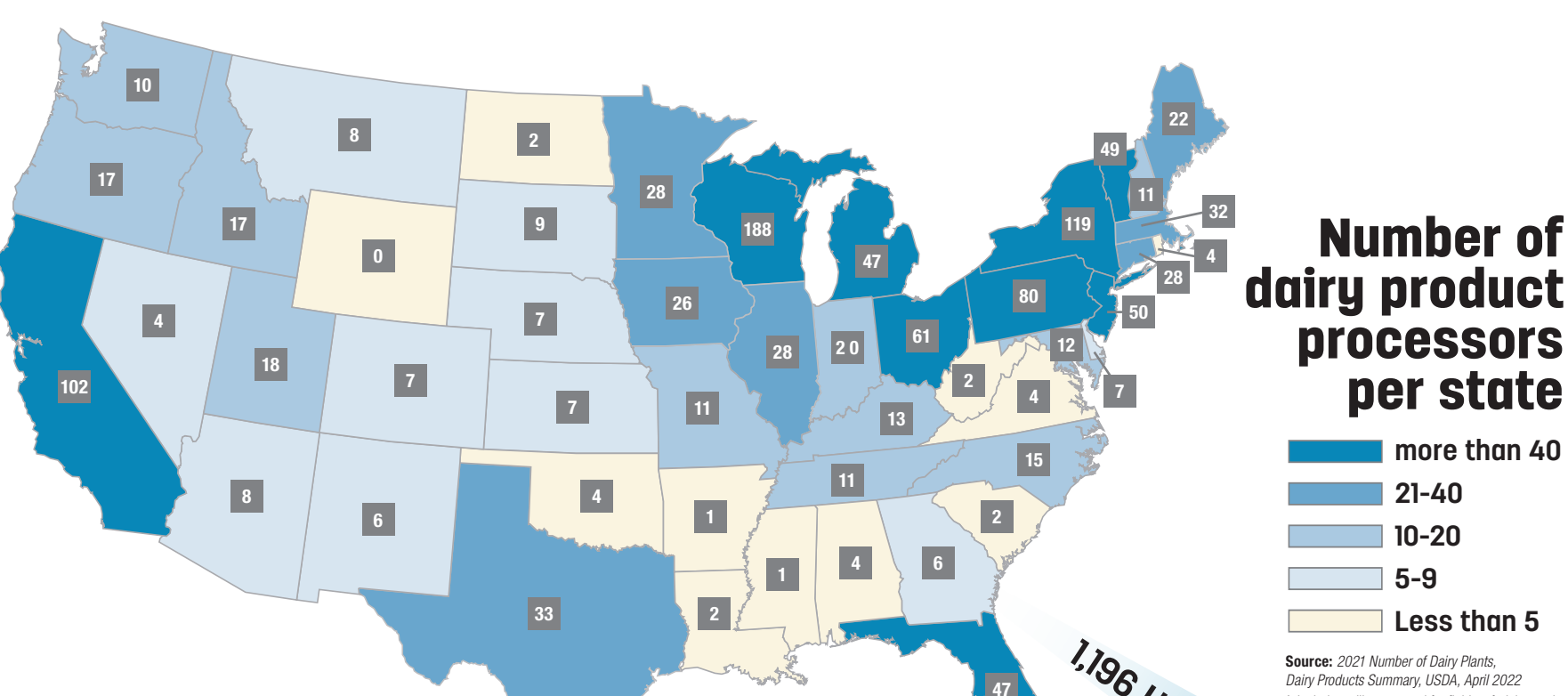
### Top 15 countries selling dairy products to the U.S.

Rank	Country	2022 Imports (in thousands of dollars)
1	Ireland	752,019
2	New Zealand	719,720
3	Italy	600,803
4	Canada	430,409
5	France	353,062
6	Mexico	304,818
7	Netherlands	260,334
8	Denmark	167,507
9	Spain	156,727
10	Germany	138,966
11	Switzerland	129,363
12	United Kingdom	120,509
13	India	77,234
14	Poland	62,241
15	Argentina	57,232



### Top 15 countries buying U.S. dairy products

Rank	Country	2022 Exports (in thousands of dollars)
1	Mexico	2,441,929
2	Canada	1,018,195
3	China	801,320
4	South Korea	565,963
5	Philippines	557,914
6	Japan	519,776
7	Indonesia	447,439
8	Vietnam	222,806
9	Malaysia	219,682
10	Australia	214,021
11	Colombia	165,842
12	Peru	159,621
13	Dominican Republic	156,825
14	Taiwan	141,177
15	Saudi Arabia	123,617



### 2022 was a year of limited growth

Record-high milk prices were countered by even higher feed and input costs and implementation of base-excess programs, putting a lid on U.S. milk production growth in 2022.

Nationally, most of the year was marked by slow but steady growth in cow numbers, while the increase in milk per cow was subdued. Dairy herd attrition and consolidation continued.

U.S. milk production rose to 226.46 billion pounds in 2022, up just 169 million pounds (0.1%) from 2021, one of the smallest year-over-year increases on record.

Thirteen states registered annual milk production increases during 2022, led by Texas and South Dakota. Offsetting those gains, 34 states yielded production declines compared with 2021, led by New Mexico and Washington.

Based on annual milk production, there were several minor changes in major dairy state rankings compared to 2021: Iowa and Ohio swapped positions at 11-12; South Dakota moved ahead of Kansas at 16-17; and Georgia jumped ahead of Florida at 21-22.

In another year of attrition and consolidation, the annual average number of dairy farms commercially licensed to sell milk fell to 27,932, a decline of 1,910 (about 6%) from the year before and down 21,349 (43%) since 2012.

On a percentage basis, year-over-year declines were fairly steady across the U.S., but 90% of the decline in herd numbers occurred in the Midwest and East regions. Wisconsin remains the nation's leader

### U.S. dairy industry 15-year overview

Year	Total milk production (in millions of lbs)	Number of cows (in thousands)	Milk per cow (lbs per year)	Licensed dairy herds	Average herd size
2008	189,982	9,315	20,395	57,127	163
2009	189,334	9,203	20,573	54,942	168
2010	192,848	9,119	21,148	53,132	172
2011	196,164	9,194	21,336	51,291	179
2012	200,537	9,233	21,720	49,281	187
2013	201,231	9,224	21,816	46,975	196
2014	206,054	9,257	22,259	44,809	207
2015	208,597	9,314	22,396	43,534	214
2016	212,405	9,325	22,778	41,819	223
2017	215,466	9,392	22,941	40,219	234
2018	217,568	9,398	23,150	37,468	251
2019	218,441	9,337	23,395	34,207	273
2020	223,220	9,388	23,777	31,657	297
2021	226,293	9,449	23,949	29,842	317
2022	226,462	9,402	24,087	27,932	337

### Dairy receipts as a % of state's total farm receipts

State	Percentage
Vermont	63%
New York	50%
Wisconsin	46%
New Mexico	40%
Idaho	36%
Pennsylvania	26%
New Hampshire	23%
Michigan	22%
Arizona	21%
Utah	21%

## Inoculant for improved aerobic stability

Reduce Yeast  Reduce Mold

+ *L. buchneri* for improved feedout and bunk life

Contact us today!  
Telephone 800-759-7569  
www.ecosyl.com @ecosylinoculantsusa

## IMPROVE MILK & COMPONENT PERFORMANCE WITH QLF

### SUGAR SUPPLEMENTATION INCREASES VALUE OF MILK COMPONENTS

A meta-analysis by independent scientists found that dietary sugar supplementation increased milk fat and protein yields with the optimal response being observed when total dietary sugar is 7% of DMI. Cows producing more than 74 pounds of milk had 0.18 pounds increase of milk fat, 0.2 pounds increase of milk protein, and 4.7 pounds increase of 3.5% FCM. QLF liquid supplements provide dietary sugar, and help improve feed intake, milk and component production.

**QLF**  
QUALITY LIQUID FEEDS  
WWW.QLF.COM

## STANDS OUT IN ITS FIELD

It's easy to see why Ritchie Waterers stand out from the competition. And it's not just because they're red and yellow. Find out how at [ritchiestandsout.com](http://ritchiestandsout.com)

**Ritchie**

## OptiCalc™

### IMPROVING HERD CALCIUM SUPPLEMENTATION

Oral calcium and vitamin D supplement for freshening cows, with fast and sustained release of calcium.

OptiCalc™ contains more calcium than other leading calcium boluses

OptiCalc™ is offered exclusively through Animal Health International. Visit [eselling.animalhealthinternational.com](http://eselling.animalhealthinternational.com) or call 800.203.5620.

**aspen**

## GALAXIS™ Frontier

### OUT-OF-THIS-WORLD RUMEN MICROBES

Galaxis Frontier is the only product made with live microbes that are native to the dairy cow's rumen. The result is optimized digestion for more energy production. And more energy means more of what lactating cows do best.

GalaxisFrontier.com

©2023 NATIVE MICROBIALS



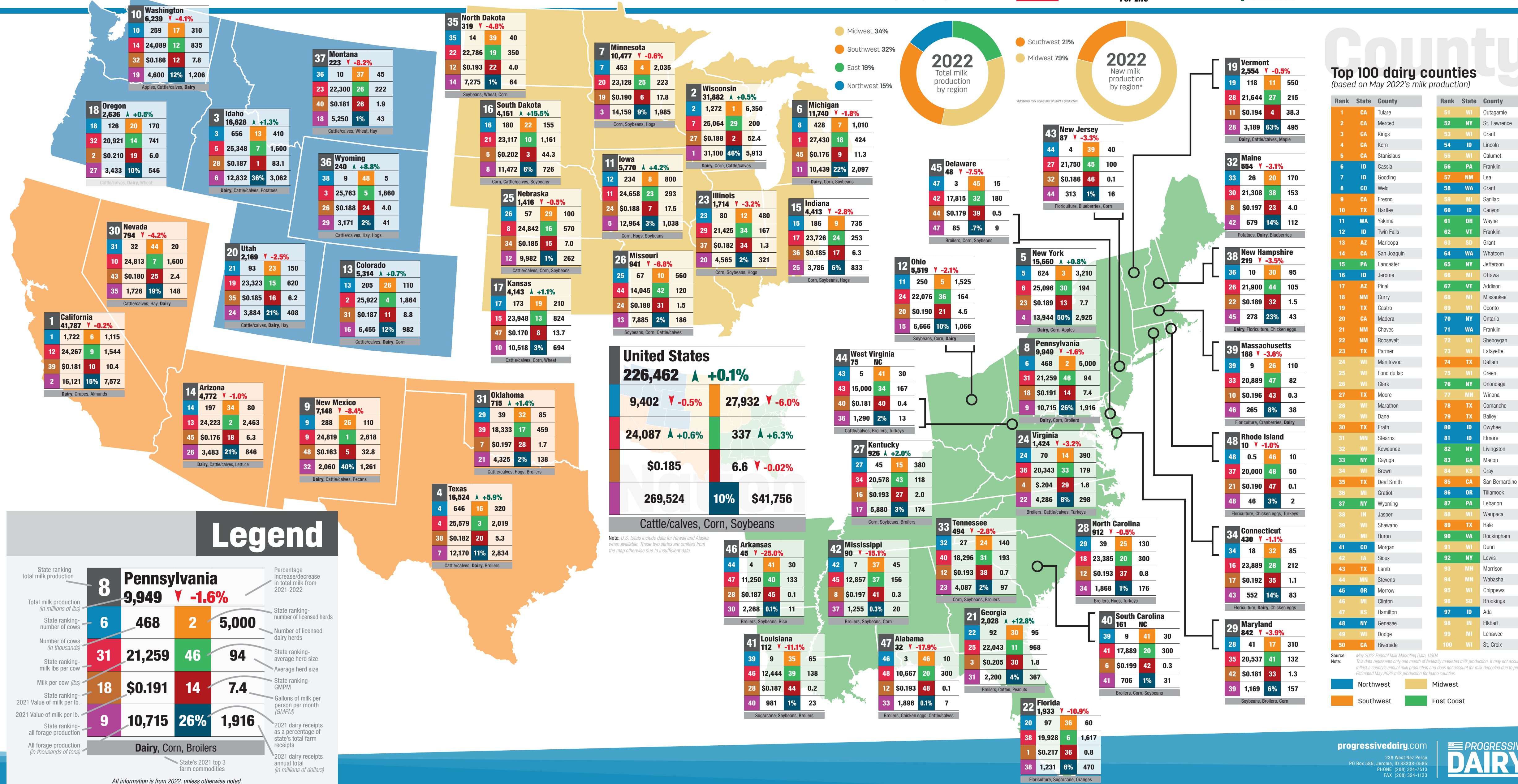
# 2022 U.S. dairy statistics



### 10-year changes by state

State rank - total milk production	State	Total milk production (in millions of lbs)	Total milk production (in millions of lbs)	Change in total milk from 2012-2022	Number of cows (1,000 head)	Number of cows (1,000 head)	Change in number of cows 2012-2022	Milk per cow (lbs. per year)	Milk per cow (lbs. per year)	Change in milk per cow 2012-2022	Number of licensed dairy herds	Number of licensed dairy herds	Change in licensed dairy herds from 2012-2022	Average herd size	Average herd size	Change in average herd size from 2012-2022
1	California	41,801	41,787	-14	1,782	1,722	-60	23,457	24,267	+810	1,605	1,115	-490	1,110	1,544	+434
2	Wisconsin	27,224	31,882	+4,658	1,270	1,272	+2	21,436	25,064	+3,628	11,490	6,350	-5,140	111	200	+90
3	Idaho	13,558	16,828	+3,070	580	656	+76	23,376	25,348	+1,972	565	410	-155	1,027	1,600	+573
4	Texas	9,596	16,524	+6,928	436	646	+210	22,009	25,579	+3,570	500	320	-180	872	2,019	+1,147
5	New York	13,190	15,660	+2,470	610	624	+14	21,623	25,096	+3,473	5,150	3,210	-1,940	118	194	+76
6	Michigan	8,991	11,740	+2,749	375	428	+53	23,976	27,430	+3,454	2,130	1,010	-1,120	176	424	+248
7	Minnesota	9,073	10,477	+1,404	465	453	-12	19,512	23,128	+3,616	4,125	2,035	-2,090	113	223	+110
8	Pennsylvania	10,478	9,949	-529	536	468	-68	19,549	21,259	+1,710	7,140	5,000	-2,140	75	94	+19
9	New Mexico	8,149	7,148	-1,001	330	288	-42	24,694	24,819	+125	140	110	-30	2,357	2,618	+261
10	Washington	6,234	6,239	+5	262	259	-3	23,794	24,089	+295	480	310	-170	546	835	+290
11	Iowa	4,512	5,770	+1,258	205	234	+29	22,010	24,658	+2,648	1,580	800	-780	130	293	+163
12	Ohio	5,355	5,519	+164	270	250	-20	19,833	22,076	+2,243	3,060	1,525	-1,535	88	164	+76
13	Colorado	3,213	5,314	+2,101	134	205	+71	23,978	25,922	+1,944	130	110	-20	1,031	1,864	+833
14	Arizona	4,508	4,772	+264	188	197	+9	23,979	24,223	+244	110	80	-30	1,709	2,463	+753
15	Indiana	3,746	4,413	+667	175	186	+11	21,406	23,726	+2,320	1,570	735	-835	111	253	+142
16	South Dakota	1,968	4,161	+2,193	92	180	+88	21,391	23,117	+1,726	325	155	-170	283	1,161	+878
17	Kansas	2,732	4,143	+1,411	126	173	+47	21,683	23,948	+2,265	340	210	-130	371	824	+453
18	Oregon	2,513	2,636	+123	123	126	+3	20,431	20,921	+490	270	170	-100	456	741	+286
19	Vermont	2,569	2,554	-15	133	118	-15	19,316	21,644	+2,328	970	550	-420	137	215	+77
20	Utah	2,033	2,169	+136	91	93	+2	22,341	23,323	+982	230	150	-80	396	620	+224
21	Georgia	1,530	2,028	+498	80	92	+12	19,125	22,043	+2,918	250	95	-155	320	968	+648
22	Florida	2,340	1,933	-407	123	97	-26	19,024	19,928	+904	130	60	-70	946	1,617	+671
23	Illinois	1,915	1,714	-201	98	80	-18	19,541	21,425	+1,884	760	480	-280	129	167	+38
24	Virginia	1,727	1,424	-303	96	70	-26	17,990	20,343	+2,353	680	390	-290	141	179	+38
25	Nebraska	1,786	1,416	-370	56	57	+1	21,179	24,842	+3,663	210	100	-110	267	570	+303
26	Missouri	1,406	941	-465	94	67	-27	14,957	14,045	-912	1,430	560	-870	66	120	+54
27	Kentucky	1,120	926	-194	74	45	-29	15,135	20,578	+5,443	840	380	-460	88	118	+30
28	North Carolina	940	912	-28	46	39	-7	20,435	23,385	+2,950	270	130	-140	170	300	+130
29	Maryland	979	842	-137	51	41	-10	19,196	20,537	+1,341	500	310	-190	102	132	+30
30	Nevada	666	794	+128	29	32	+3	22,966	24,813	+1,847	20	20	NC	1,450	1,600	+150
31	Oklahoma	849	715	-134	48	39	-9	17,688	18,333	+645	200	85	-115	240	459	+219
32	Maine	613	554	-59	33	26	-7	18,576	21,308	+2,732	310	170	-140	106	153	+46
33	Tennessee	805	494	-311	50	27	-23	16,100	18,296	+2,196	420	140	-280	119	193	+74
34	Connecticut	358	430	+72	18	18	NC	19,889	23,889	+4,000	130	85	-45	138	212	+73
35	North Dakota	347	319	-28	18	14	-4	19,278	22,786	+3,508	130	40	-90	138	350	+212
36	Wyoming	124	240	+116	6	9	+3	20,650	25,763	+5,113	20	5	-15	300	1,860	+1,560
37	Montana	299	223	-76	14	10	-4	21,357	22,300	+943	70	45	-25	200	222	+22
38	New Hampshire	275	219	-56	14	10	-4	19,643	21,900	+2,257	120	95	-25	117	105	-11
39	Massachusetts	219	188	-31	12	9	-3	18,250	20,889	+2,639	155	110	-45	77	82	+4
40	South Carolina	276	161	-115	16	9	-7	17,250	17,889	+639	80	30	-50	200	300	+100
41	Louisiana	222	112	-110	17	9	-8	13,059	12,444	-615	140	65	-75	121	138	+17
42	Mississippi	199	90	-109	14	7	-7	14,214	12,857	-1,357	110	45	-65	127	156	+28
43	New Jersey	130	87	-43	7	4	-3	18,571	21,750	+3,179	80	40	-40	88	100	+13
44	West Virginia	158	75	-83	10	5	-5	15,800	15,000	-800	95	30	-65	105	167	+61
45	Delaware	94	48	-46	4.9	2.7	-2.2	19,143	17,815	-1,328	50	15	-35	98	180	+82
46	Arkansas	133	45	-88	10	4	-6	13,300	11,250	-2,050	100	30	-70	100	133	+33
47	Alabama	132	32	-100	10	3	-7	13,200	10,667	-2,533	50	10	-40	200	300	+100
48	Rhode Island	18	10	-8	1	0.5	-0.5	18,300	20,000	+1,700	15	10	-5	67	50	-17
U.S. total		200,537	226,462	+25,925	9,233	9,402	+169	21,720	24,087	+2,367	49,281	27,932	-21,349	187	337	+149

Source: February 2023 Milk Production Report, USDA. Statistical ties are represented by the same numerical ranking.



For reprints, contact Progressive Publishing at (208) 324-7513 or download the latest copies of our dairy, forage or beef stats online at progressivepublish.com/stats