

# Global production and trade

## Market prices and indexes

progressivecattle.com  
Jerome, ID — (800) 320-1424 or (208) 324-7513  
Chandler, AZ — (949) 253-4191  
Delta, CO — (970) 823-3219  
Mountain Grove, MO — (417) 926-3596

PROGRESSIVE  
**CATTLE**

## PROGRESSIVE **CATTLE** 2021 beef statistics

### U.S. beef production climbs through pandemic

Progressive Cattle Editor David Cooper

The stunning and unprecedented events of 2020, with a global health pandemic that took hundreds of thousands of lives and rattled the world economy, had a profound effect on the U.S. beef industry.

As global trade with U.S. partners dropped for a second consecutive year, this time 5% lower, the country continued to process more beef than ever in its history.

Production hit 27.2 billion pounds in 2020 due in large part to a market demand for beef as the COVID-19 pandemic shut down restaurants and large service spaces. Grocery demand soared for beef, but a backlog at slaughter facilities took months to work out nationwide, and plant workers battled outbreaks of the virus in their own facilities.

Those conditions led to a phenomenal spike in the weekly Choice cutout values, and boxed beef prices soared to unforeseen levels. The Chicago Mercantile Exchange (CME) prices for feeder calves climbed as well and stayed in the \$140-per-hundredweight (cwt) range for much of the year.

Liquidation of the herd continued in 2020 as the overall beef cow inventory

**Texas**  
The Lone Star State increased its cattle inventory jump 200,000 head and its beef cows another 2.5% to 4.7 million head. It leads the nation in both categories.

**United States**  
In spite of a global pandemic, the U.S. produced a record amount of beef in 2020 with 27.2 million pounds (12.6 metric tons), which is 20.5% of global beef produced.

**Hong Kong/China**  
Steady growth continued for Hong Kong and Chinese beef trade in 2020, as the joint nations bought 128,803 metric tons of U.S. beef, a 25% increase, worth \$976 million.

dropped 0.6% to 31.2 million head of cows. Overall cattle and calf inventory also dipped slightly to 93.6 million head.

But inventories in some of the key cattle states did expand as Texas (2.5%), Oklahoma (3.8%), Kansas (2.4%) and South Dakota (0.9%) all saw beef cow numbers increase. The beef cow numbers dropped in other prominent beef states such as Missouri (-2.3%), Nebraska (-1.1%) and Montana (-0.6%). The national calf crop saw a small increase to 1.9%.

#### Global trade and production

The U.S. with its overall beef output of 12.6 million metric tons of beef, a 1.8% increase over 2019, remains the top producer in the world, followed by Brazil, the European Union, China and India. The U.S. accounts for 20.5% of the world's beef production. But Brazil

still exports the most volume of beef, shipping 2.7 million metric tons to trade partners in 2020.

Japan remains the top export consumer for U.S. beef with 306,140 metric tons purchased, which was still a 2% drop from 2019. But the value of beef bought by the Japanese remained relatively the same with \$1.94 billion spent. Japan's neighbor South Korea also saw a small decline in volume and value of U.S. beef, but still stayed the No. 2 trade destination.

Beef and veal imports to the U.S. saw a sharp increase of 9% from the previous year, fueled by more beef from Canada, Australia, Mexico and New Zealand, in that respective order.

New Zealand's shipments of beef and veal jumped 29% to 170,488 metric tons. A host of other partners in South America, namely Brazil, Uruguay and Argentina, saw significant jumps in their

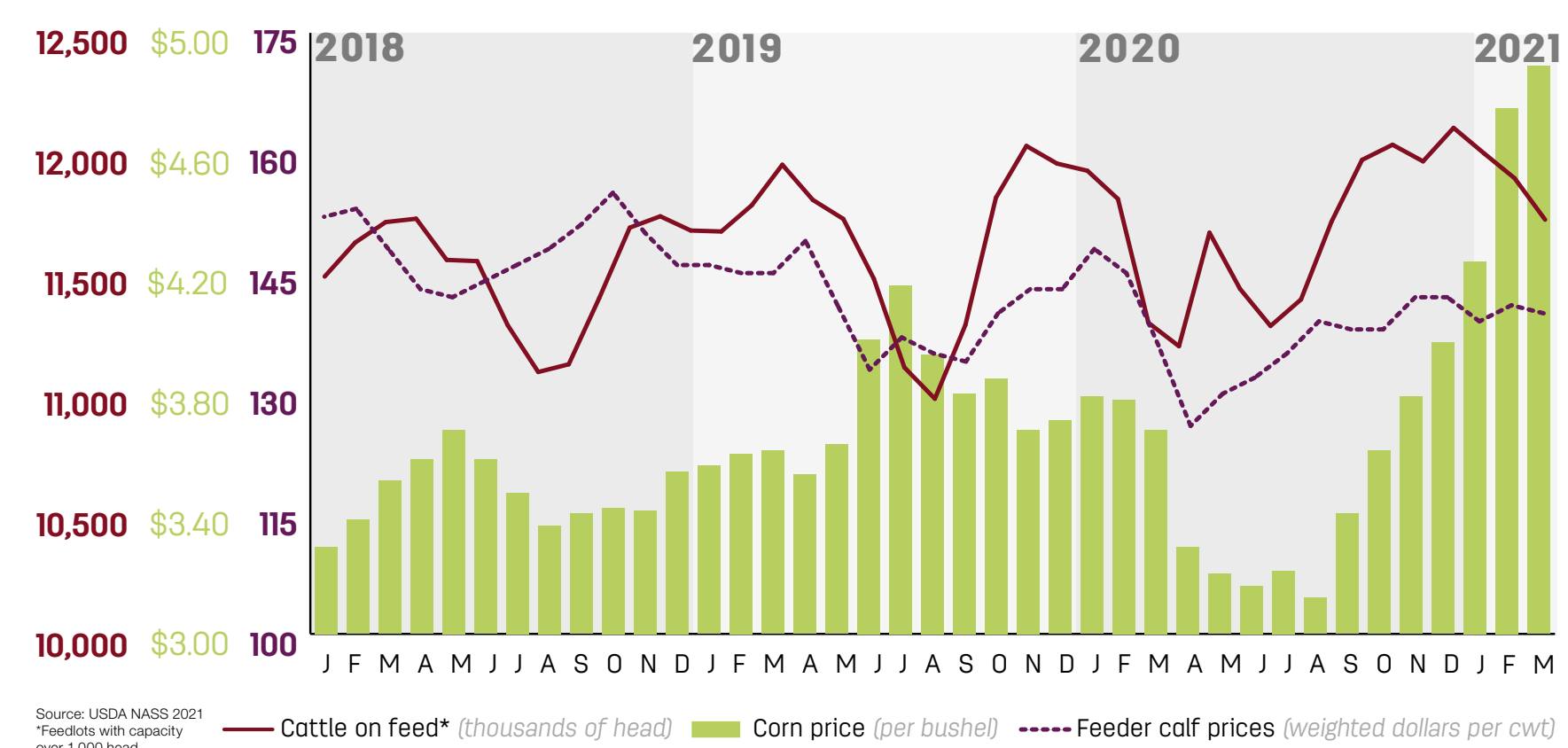
export amounts to the U.S. The total value of imports to the U.S. went up to \$6.8 billion, a 14% increase from 2019.

#### Feed and calf prices

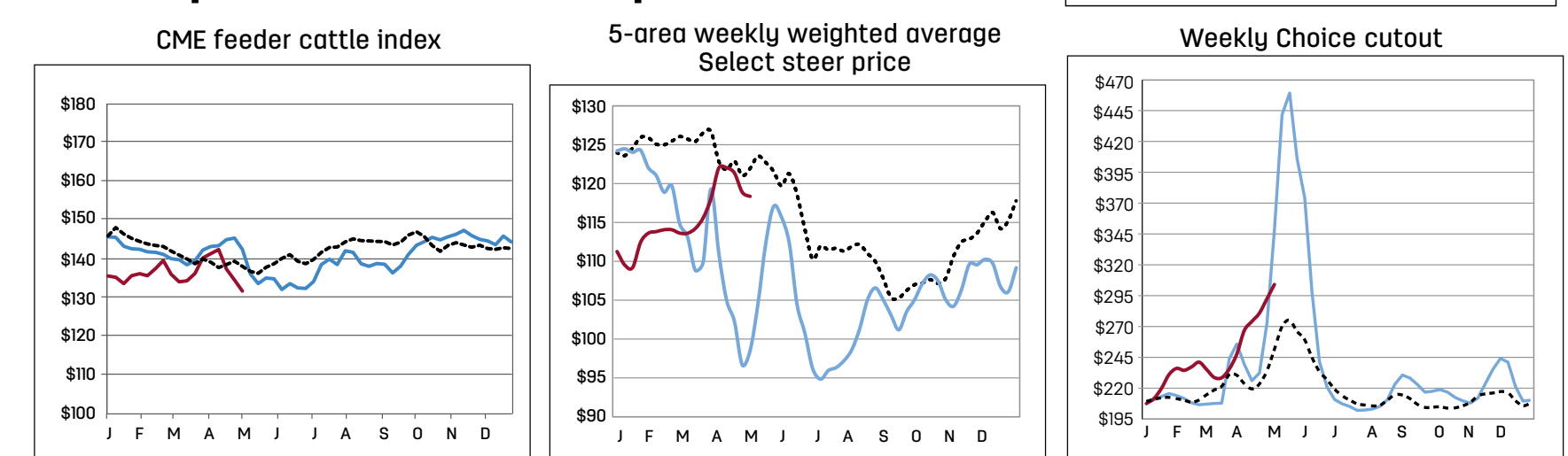
The late season weather of 2020 had a negative effect after record corn plantings earlier in the year finished with 91 million acres, some 6 million fewer than indicated earlier and a crash of prices to historic lows. The corn bushel price then rebounded in fall 2020 and began to soar into 2021 to some of the highest prices for feed seen in eight years.

Five-area weekly weighted average Select steer prices were volatile through much of 2020 before settling into the \$105-per-cwt range. Overall sales of cattle in the U.S. took a half percent decline down to 52.3 million overall sales, and receipts saw a 1.2% dip to \$63.1 billion.

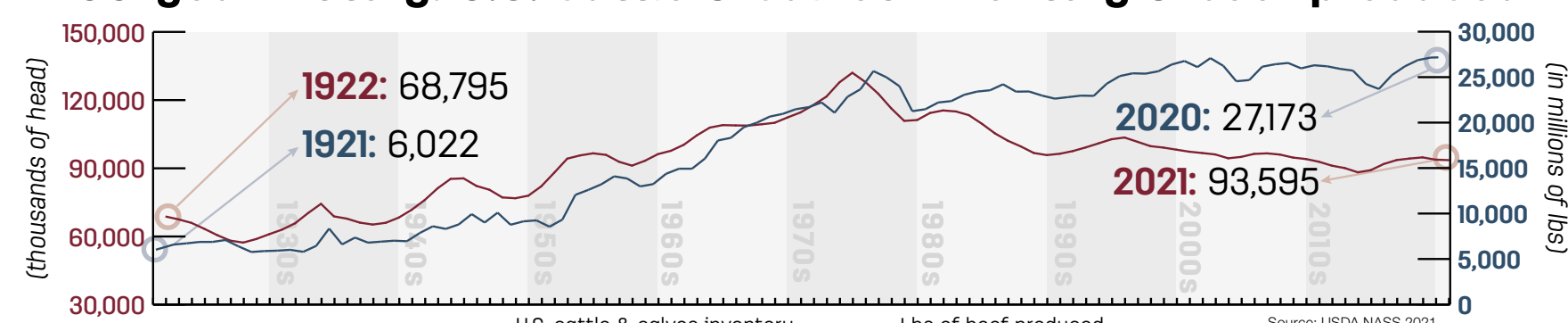
### 2018-21 – Monthly cattle on feed, corn price and feeder calf prices



### Cattle price indexes and spreads



### 100-year history: U.S. cattle & calves inventory & beef produced



### Top 20 countries buying U.S. beef products (exports)

Rank	Country	2020 Beef and veal variety meat (in thousands of metric tons)	Percent change from 2019	Rank	Country	2020 Beef and veal variety meat (in thousands of metric tons)	Percent change from 2019
1	Japan	306,140	-2%	1	Japan	\$1,943,794	0%
2	South Korea	246,231	-4%	2	South Korea	\$1,721,967	-7%
3	Mexico	192,951	-18%	3	Mexico	\$852,641	-23%
4	Hong Kong/China(*)	128,803	25%	4	Hong Kong/China(*)	\$975,869	18%
5	Canada	108,227	8%	5	Canada	\$727,526	11%
6	Taiwan	63,752	0%	6	Taiwan	\$551,677	-3%
7	Egypt	49,332	-23%	12	Egypt	\$56,590	-26%
8	Indonesia	18,996	-19%	9	Indonesia	\$71,856	-16%
9	South Africa	16,091	43%	23	South Africa	\$11,804	32%
10	Philippines	12,680	-31%	10	Philippines	\$62,222	-29%
11	Vietnam	11,096	-13%	11	Vietnam	\$58,802	-23%
12	Netherlands	9,744	-2%	8	Netherlands	\$120,134	0%
13	Peru	9,031	20%	18	Peru	\$19,561	-20%
14	Chile	8,704	-24%	13	Chile	\$50,632	-25%
15	Guatemala	5,879	0%	15	Guatemala	\$37,043	0%
16	Colombia	4,553	-32%	17	Colombia	\$19,883	-22%
17	Dominican Republic	4,285	-47%	16	Dominican Republic	\$33,717	-49%
18	United Arab Emirates	4,194	-26%	14	United Arab Emirates	\$41,634	-30%
19	Jamaica	3,960	-34%	25	Jamaica	\$7,823	-64%
20	Angola	3,509	-6%	28	Angola	\$3,159	-19%
World total		1,254,756	-5%	World total		\$7,648,972	-5%

Source: 2021 USDA, U.S. Meat Export Federation (\*) denotes a country that is a summation of its component countries. Editor's note: A list graphic for top nations that export beef, showing rank for beef & veal exports, total value in 2020 and % change from 2019. A secondary ranking can be used for the export leaders of beef variety meats with accommodating ranking.

### Top 10 countries shipping beef products to the U.S. (imports)

Rank	Country	2020 Beef and veal imported (in thousands of metric tons)	Percent change from 2019	Rank	Country	2020 Beef and veal imported (in thousands of metric tons)	Percent change from 2019
1	Canada	286,864	-2%	1	Canada	\$1,719,308	+4%
2	Mexico	240,841	+11%	2	Mexico	\$1,394,977	+12%
3	Australia(*)	220,764	-8%	3	Australia(*)	\$1,499,609	+3%
4	New Zealand(*)	170,488	+29%	4	New Zealand(*)	\$941,317	+35%
5	Nicaragua	64,033	+4%	6	Nicaragua	\$309,009	+8%
6	Brazil	59,268	+49%	5	Brazil	\$415,290	+28%
7	Uruguay	46,337	+25%	7	Uruguay	\$294,582	+24%
8	Argentina	20,760	+170%	8	Argentina	\$111,049	+916%
9	Costa Rica	9,648	+26%	9	Costa Rica	\$44,885	+31%
10	Ireland	8,600	+170%	11	Ireland	\$40,101	+103%
World total		1,131,725	+9%	World total		\$6,837,344	+14%

Source: 2021 Department of Commerce, U.S. Census Bureau, Foreign Trade Statistics (\*) denotes a country that is a summation of its component countries. Editor's note: A list graphic for top nations that export beef, showing rank for beef & veal exports, total value in 2020, and % change from 2019. A secondary ranking can be used for the export leaders of beef variety meats with accommodating ranking.

### Beef production for selected countries

Country	2020 Volume (in thousands of metric tons)	Percent change from 2019	World beef production rank	2020 Beef cattle (in thousands of head)	Percent change from 2019	Beef/veal exported (in thousands of metric tons)	Percent change from 2019	2020 Beef cattle slaughtered (in thousands of head)	Percent change from 2019
1 United States	12,601	+1.8%	20.5%	4 93,595	-0.2%	2 1,427	+6.4%	4 33,895	+1.7%
2 Brazil	10,400	+3.0%	16.9%	2 252,700	+3.5%	1 2,725	+7.3%	2 40,710	+3.3%
3 European Union	7,730	-1.0%	12.6%	5 85,545	-1.2%	9 360	+2.9%	5 26,100	-0.5%
4 China	7,000	+4.2%	11.4%	3 95,620	+4.8%	4 20	+25.0%	1 49,500	+6.1%
5 India	4,000	+6.4%	6.5%	1 305,500	-1.2%	4 1,375	+7.1%	3 37,000	+3.4%
6 Argentina	3,100	-4.0%	5.0%	6 53,831	-1.2%	5 770	-6.0%	6 13,650	-4.2%
7 Mexico	2,110	+1.5%	3.4%	9 17,000	+0.6%	11 350	+2.0%	8 6,513	+2.8%
8 Australia	2,060	-3.0%	3.3%	7 23,217	-2.0%	3 1,390	-5.8%	7 7,305	-3.4%
9 Pakistan	1,840	+1.1%	3.0%	NA NA	NA	14 75	+7.1%	NA NA	NA
10 Russia	1,378	0.0%	2.2%	8 17,953	-0.4%	18 35	+6.1%	9 6,470	-0.5%
11 Canada	1,345	+2.7%	2.2%	11 11,150	-1.0%	7 520	+1.4%	11 3,600	+3.0%
12 South Africa	970	+2.1%	1.6%	NA NA	NA	15 55	+3.8%	NA NA	NA
13 Colombia	765	+2.8%	1.2%	NA NA	NA	16 43	0.0%	NA NA	NA
14 New Zealand	681	-6.3%	1.1%	12 10,063	-0.9%	6 600	-6.0%	10 4,260	-7.9%
15 Uruguay	560	+7.7%	0.9%	10 11,946	+4.5%	8 435	+5.6%	12 2,200	+8.9%
16 Paraguay	540	-1.8%	0.9%	NA NA	NA	10 360	-3.0%	NA NA	NA
Total of selected countries	57,080	-0.1%	92.7%	978,120	+1.4%	10,540	+1.5%	231,203	-1.3%

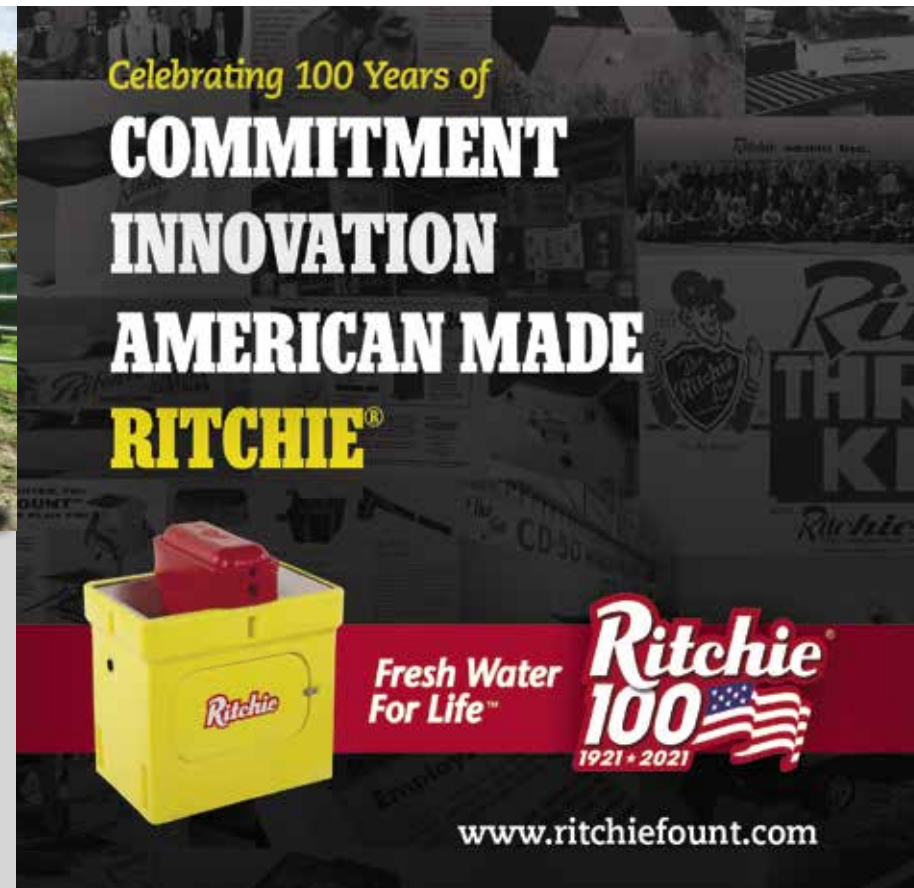
Source: USDA Foreign Agricultural Service

## QLF PROVIDES VALUE TO OUR OPERATION

"Quality Liquid Feeds has provided us with technical expertise we needed to support our feeding strategy and even offered resources to help us succeed outside of the feedbunk. We are competitive in the marketplace because of the support we receive from QLF."

DALE SWANSON, SWANSON FEEDLOT

800.236.2345 | WWW.QLF.COM



### Performance-Minded Solutions from Professionals in Livestock Nutrition

**Anipro**  
XTRAFORMANCE FEEDS  
**XF**

**Livestock Protein Supplements**  
Liquids & Tubs  
**WeatherPro Minerals**

Call your Anipro dealer, 800-558-3341 or visit Anipro.com!



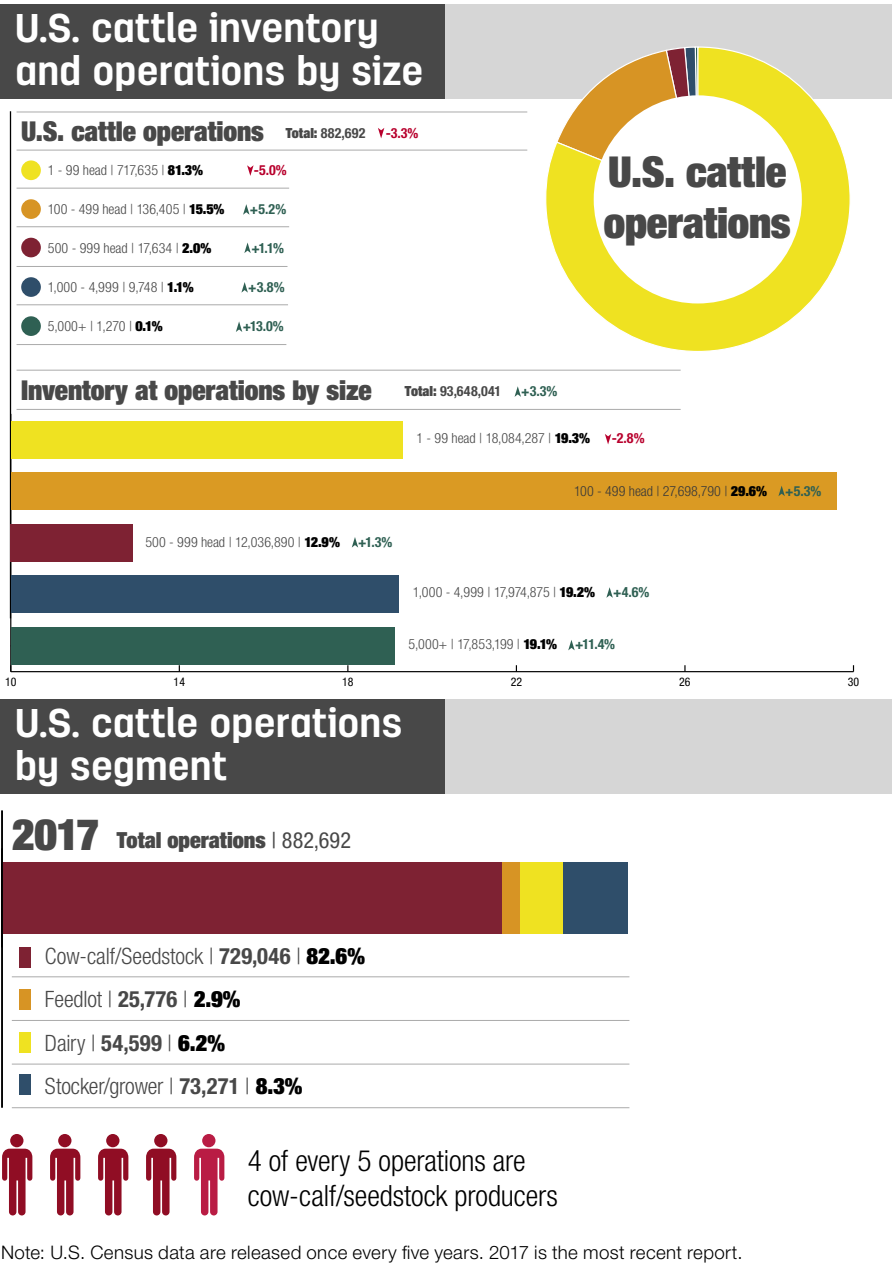
ADJUSTABLE CHUTE & ALLEY | DURABLE POWDER COAT FINISH





2021 U.S. beef statistics

Top 50 beef cow counties					
State	County	2021 head	2021 rank	2020 head	2020 rank
NE	Holt	97,000	1	98,000	1
FL	Okeechobee	81,000	2	80,000	3
NE	Lincoln	80,000	3	81,000	2
SD	Meade	79,000	4	79,000	4
MT	Fergus	76,000	5	77,000	5
OR	Malheur	74,000	6	75,000	6
FL	Highlands	71,000	7	70,000	7
CA	Tulare	71,000	7	69,000	8
MT	Beaverhead	69,000	9	69,000	8
SD	Tripp	69,000	9	67,000	11
OR	Harney	67,000	11	68,000	10
SD	Perkins	64,000	12	63,000	12
FL	Polk	63,000	13	62,000	13
FL	Osceola	62,000	14	61,000	14
OK	Osage	60,000	15	57,000	15
TX	Gonzales	59,000	16	57,000	15
NE	Sheridan	56,000	17	56,000	18
WY	Fremont	55,000	18	57,000	15
ND	Morton	54,000	19	55,000	19
MO	Polk	53,000	20	54,000	21
MT	Custer	53,000	20	53,000	22
OK	Caddo	53,000	20	51,000	26
MT	Carter	52,000	23	52,000	23
TX	De Witt	52,000	23	51,000	26
NE	Knox	51,000	25	52,000	23
WY	Carbon	51,000	25	52,000	23
MT	Big Horn	50,000	27	51,000	26
MT	Madison	50,000	27	50,000	30
TX	Hopkins	50,000	27	48,500	35
WY	Campbell	49,500	30	51,000	26
MO	Lawrence	49,500	30	50,000	30
SD	Fall River	49,500	30	49,000	33
MT	Phillips	49,000	33	49,500	32
SD	Harding	49,000	33	49,000	33
SD	Haakon	48,500	35	48,500	35
AR	Benton	48,500	35	48,000	37
MT	Rosebud	48,000	37	48,000	37
OK	Craig	48,000	37	46,000	45
CO	Weld	47,500	39	55,000	19
MT	Powder River	47,000	40	47,000	40
ND	McKenzie	46,500	41	47,500	39
OR	Lake	46,500	41	47,000	40
OK	Muskogee	46,500	41	45,000	49
MO	Texas	46,000	44	47,000	40
SD	Charles Mix	46,000	44	45,500	47
TX	Van Zandt	46,000	44	45,000	49
TX	Colorado	46,000	44	45,000	49
MO	Barry	45,500	48	46,500	43
OR	Baker	45,500	48	46,500	43
MO	Newton	45,000	50	46,000	45



5-year beef cow herd expansion					
Top 10					
Rank in growth	State	Change of head	2021	2016	Percent change
1	Texas	+395,000	4,685,000	4,290,000	+9.2%
2	Oklahoma	+266,000	2,189,000	1,923,000	+13.8%
3	Missouri	+151,000	2,035,000	1,884,000	+8.0%
4	South Dakota	+129,000	1,799,000	1,670,000	+7.7%
5	North Dakota	+71,000	975,000	904,000	+7.9%
6	California	+70,000	670,000	600,000	+11.7%
7	Nebraska	+48,000	1,900,000	1,852,000	+2.6%
8	New Mexico	+48,000	463,000	415,000	+11.6%
9	Pennsylvania	+45,000	215,000	170,000	+26.5%
10	Wisconsin	+40,000	310,000	270,000	+14.8%
Bottom 5					
Rank in growth	State	Change of head	2021	2016	Percent change
46	Kentucky	-38,000	983,000	1,021,000	-3.7%
47	Illinois	-40,000	356,000	396,000	-10.1%
48	Iowa	-50,000	890,000	940,000	-5.3%
49	Montana	-67,000	1,419,000	1,486,000	-4.5%
50	Colorado	-111,000	659,000	770,000	-14.4%

Source: USDA NASS 2021

