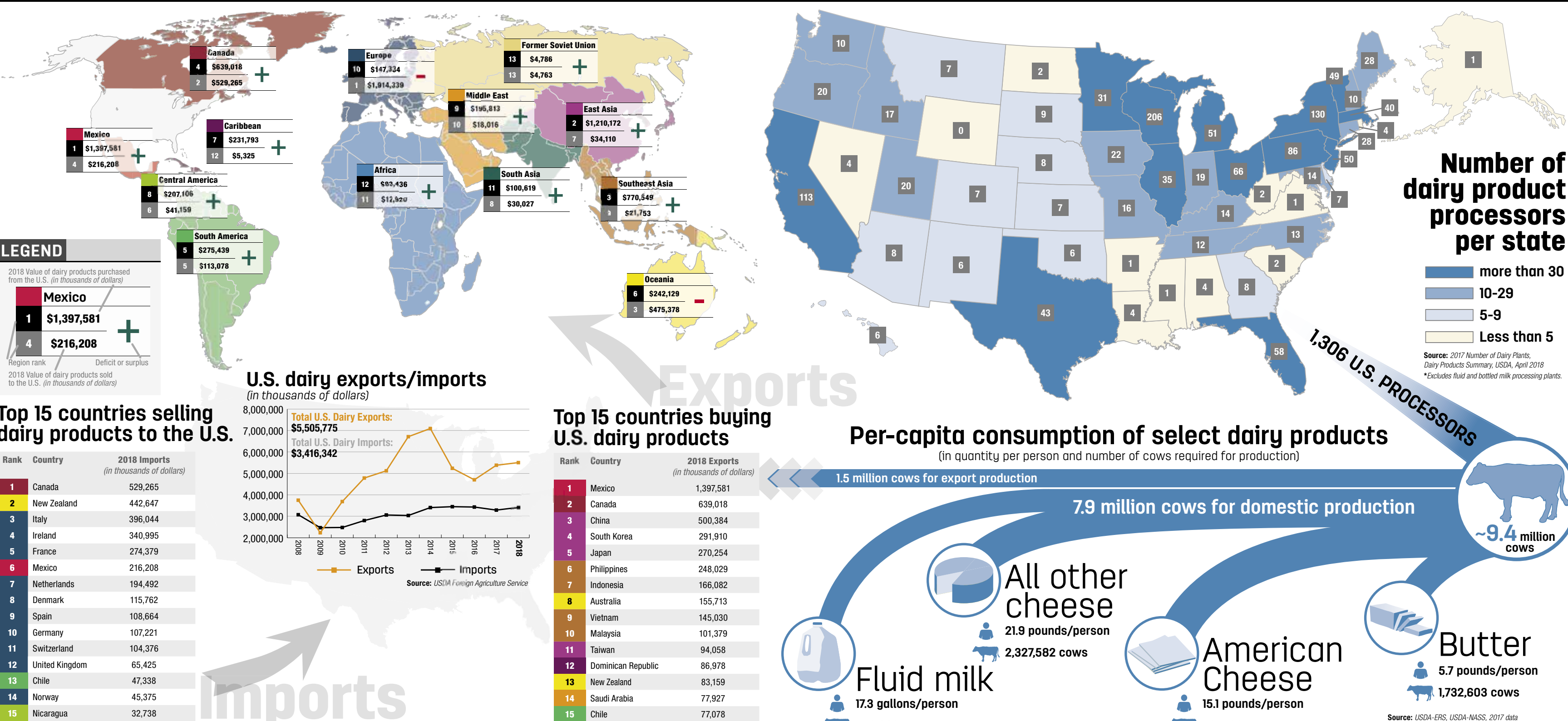
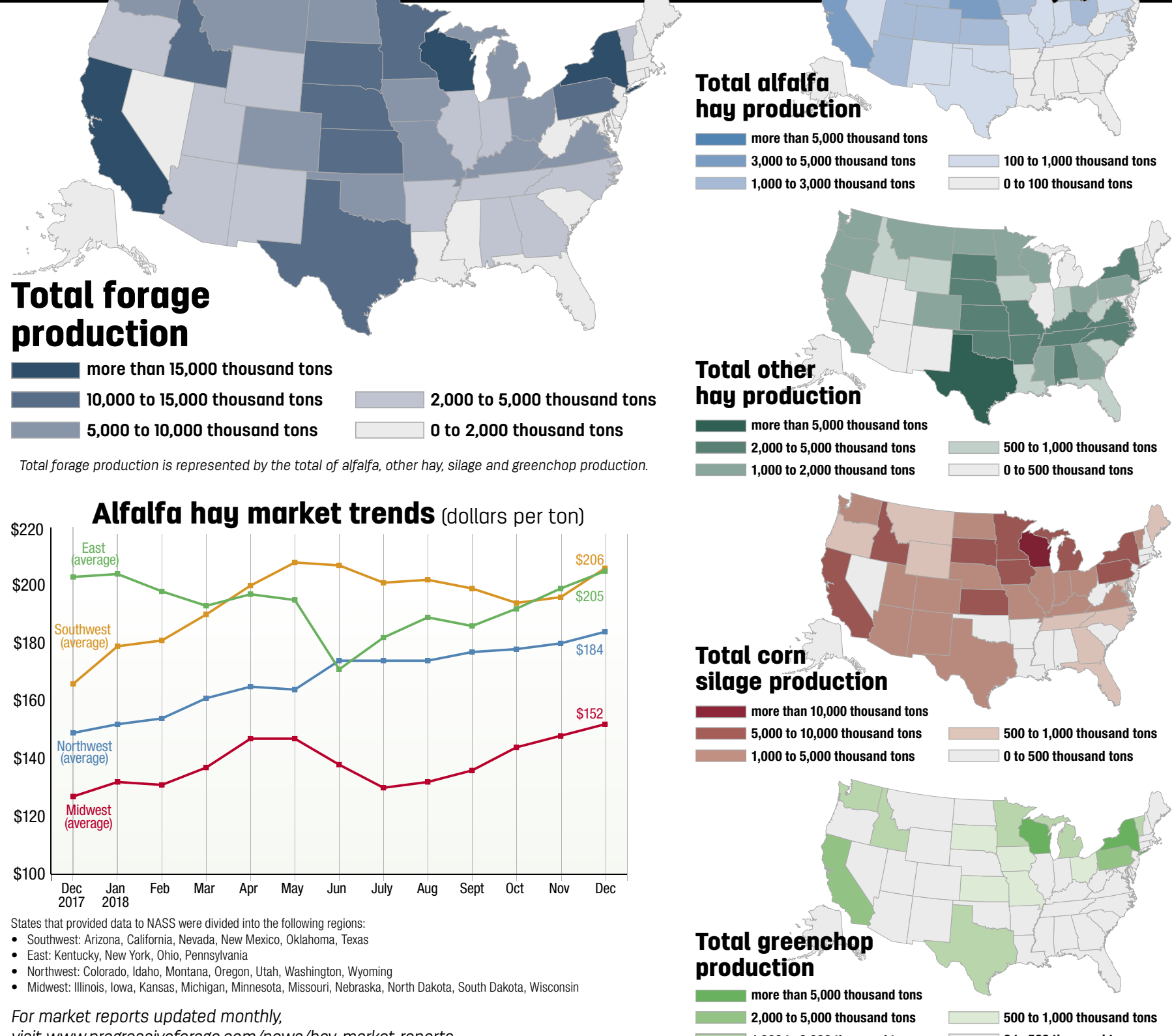


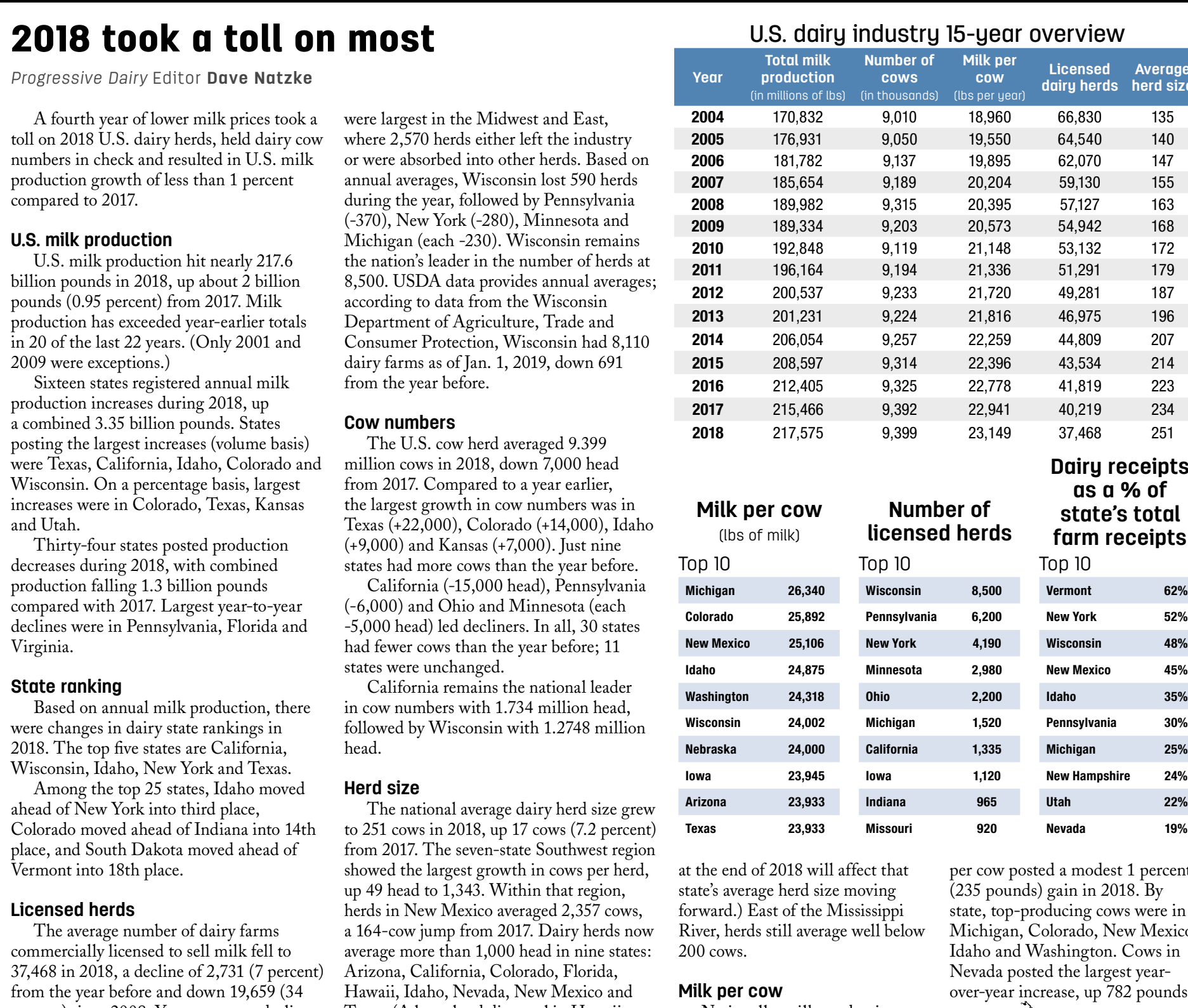
2018 U.S. dairy trade & processing



2018 U.S. forage statistics



2018 U.S. dairy statistics



vas
Meet Your New ParlorBoss

The ultimate tool for herd organization and treatment in the parlor — VAS ParlorBoss minimizes lockup times and gives your herd more time to do what it does best: produce milk.

Learn More at VAS.com.

1. ↑ IMPROVES RUMEN EFFICIENCY

2. ↑ INCREASES COMPONENT VALUE

3. ↓ REDUCES HEALTH ISSUES

Why QLF?
Feeding molasses based liquid supplements at recommended levels increases fiber digestibility. This allows dairy producers to maintain milk production on higher-forage diets. Higher-forage diets lead to better rumen efficiency, production of milk with higher components and cows with less health issues. Sugars stimulate fiber-digesting bacteria more effectively than starch.

IMPROVES FIBER DIGESTIBILITY

QLF QUALITY LIQUID FEEDS

www.qlf.com 800.236.2345

ST Genetics
RESPONSIBLE AND SUSTAINABLE INNOVATION

THE BEST WAY TO PREDICT THE FUTURE IS TO *Create it*

SCIENCE & TECHNOLOGY

RESEARCH & DEVELOPMENT

PARTNERING WITH PRODUCERS

CUSTOMER SERVICE AND INTERNATIONAL SALES
+1 920 921-5850 or +1 800 525-2953 | CS@STgen.com

US DAIRY SALES
844 828-7849 | Dairy@STgen.com

stgen.com

Follow us on: [facebook.com/STGenetics](https://www.facebook.com/STGenetics)

OUR ENERGY BOOSTER FAMILY IS GROWING!

ENERGY BOOSTER

ENERGY BOOSTER MERGE

EB NET

ENERGY BOOSTER Mag

EB US

MILKSPECIALTIES
GLOBAL
Animal Nutrition
PROVIDING SCIENCE-BASED SOLUTIONS

www.milkspecialties.com

START FEEDING TODAY!
800-323-4274

The **ENERGETIC ADVANTAGE** for high producing dairy cows

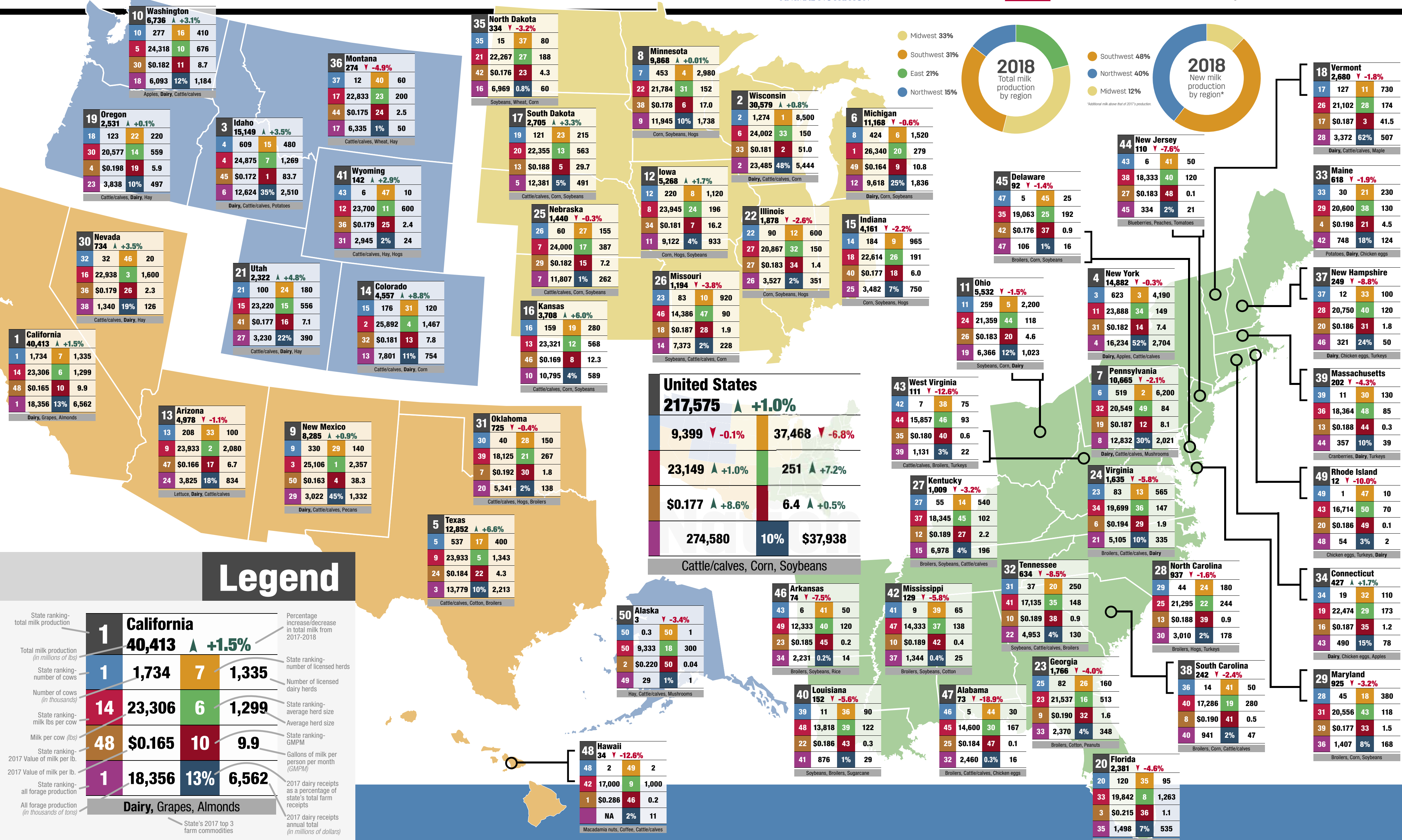
Made in the U.S.A.

2018 U.S. dairy statistics

10-year changes by state													
State rank-total milk production	State	Total milk production (in millions of lbs)	Total milk production (in millions of lbs)	Change in total milk from 2008-2018	Number of cows (1,000 head)	Number of cows (1,000 head)	Change in number of cows 2008-2018	Milk per cow (lbs. per year)	Milk per cow (lbs. per year)	Change in milk per cow 2008-2018	Number of licensed dairy herds	Number of licensed dairy herds	Change in licensed dairy herds 2008-2018
2008	2018	2008	2018	2008	2018	2018	2018	2008	2018	2008	2018	2018	2018
1	California	41,203	40,413	-790	1,844	1,734	-110	22,344	23,306	+962	1,905	1,335	-570
2	Wisconsin	24,472	30,579	+6,107	1,252	1,274	+22	19,546	24,002	+4,456	13,730	8,500	-5,230
3	Idaho	12,315	15,149	+2,834	549	609	+60	22,432	24,875	+2,443	635	480	-155
4	New York	12,432	14,882	+2,450	626	623	-3	19,859	23,888	+4,029	5,620	4,190	-1,430
5	Texas	8,416	12,852	+4,436	418	537	+119	20,134	23,933	+3,799	670	400	-270
6	Michigan	7,763	11,168	+3,405	350	424	+74	22,180	26,340	+4,160	2,390	1,520	-870
7	Pennsylvania	10,575	10,665	+90	549	519	-30	19,262	20,549	+1,287	7,670	6,200	-1,470
8	Minnesota	8,782	9,868	+1,086	464	453	-11	18,927	21,784	+2,857	4,865	2,980	-1,885
9	New Mexico	7,865	8,285	+420	338	330	-8	23,269	25,106	+1,837	160	140	-20
10	Washington	5,886	6,736	+850	244	277	+33	23,344	24,318	+974	500	410	-90
11	Ohio	5,130	5,532	+402	280	259	-21	18,321	21,359	+3,038	3,360	2,200	-1,160
12	Iowa	4,319	5,268	+949	216	220	+4	19,995	23,945	+3,950	2,020	1,120	-900
13	Arizona	4,349	4,978	+629	186	208	+22	23,382	23,933	+551	120	100	-20
14	Colorado	2,935	4,557	+1,622	128	176	+48	22,930	25,892	+2,962	140	120	-20
15	Indiana	3,287	4,161	+874	167	184	+17	19,683	22,614	+2,931	1,670	965	-705
16	Kansas	2,415	3,708	+1,293	117	159	+42	20,641	23,321	+2,680	425	280	-145
17	South Dakota	1,796	2,705	+909	90	121	+31	19,956	22,355	+2,399	490	215	-275
18	Vermont	2,576	2,680	+104	140	127	-13	18,400	21,102	+2,702	1,100	730	-370
19	Oregon	2,254	2,531	+277	114	123	+9	19,772	20,577	+805	300	220	-80
20	Florida	2,060	2,381	+321	120	120	NC	17,167	19,842	+2,675	140	95	-45
21	Utah	1,776	2,322	+546	85	100	+15	20,894	23,220	+2,326	260	180	-80
22	Illinois	1,894	1,878	-16	102	90	-12	18,569	20,867	+2,298	960	600	-360
23	Georgia	1,355	1,766	+411	76	82	+6	17,829	21,537	+3,708	270	160	-110
24	Virginia	1,726	1,635	-91	98	83	-15	17,612	19,699	+2,087	725	565	-160
25	Nebraska	1,083	1,440	+357	58	60	+2	18,672	24,000	+5,328	320	155	-165
26	Missouri	1,615	1,194	-421	110	83	-27	14,682	14,386	-296	1,760	920	-840
27	Kentucky	1,210	1,009	-201	90	55	-35	13,444	18,345	+4,901	1,060	540	-520
28	North Carolina	892	937	+45	47	44	-3	18,979	21,295	+2,316	300	180	-120
29	Maryland	1,029	925	-104	56	45	-11	18,375	20,556	+2,181	570	380	-190
30	Nevada	559	734	+175	27	32	+5	20,704	22,938	+2,234	25	20	-5
31	Oklahoma	1,061	725	-336	64	40	-24	16,578	18,125	+1,547	310	150	-160
32	Tennessee	948	634	-314	59	37	-22	16,068	17,135	+1,067	550	250	-300
33	Maine	603	618	+15	33	30	-3	18,273	20,600	+2,327	330	230	-100
34	Connecticut	364	427	+63	19	19	NC	19,158	22,474	+3,316	150	110	-40
35	North Dakota	418	334	-84	26	15	-11	16,077	22,267	+6,190	255	80	-175
36	Montana	313	274	-39	17	12	-5	18,412	22,833	+4,421	80	60	-20
37	New Hampshire	299	249	-50	15	12	-3	19,933	20,750	+817	130	100	-30
38	South Carolina	322	242	-80	18	14	-4	17,889	17,286	-603	80	50	-30
39	Massachusetts	254	202	-52	15	11	-4	16,933	18,364	+1,431	180	130	-50
40	Louisiana	319	152	-167	26	11	-15	12,269	13,818	+1,549	200	90	-110
41	Wyoming	136	142	+6	7	6	-1	19,386	23,700	+4,314	25	10	-15
42	Mississippi	291	129	-162	20	9	-11	14,550	14,333	-217	160	65	-95
43	West Virginia	181	111	-70	12	7	-5	15,083	15,857	+774	110	75	-35
44	New Jersey	169	110	-59	10	6	-4	16,900	18,333	+1,433	110	50	-60
45	Delaware	110	92	-18	7	5	-2	16,923	19,063	+2,140	55	25	-30
46	Arkansas	186	74	-112	15	6	-9	12,400	12,333	-67	150	50	-100
47	Alabama	184	73	-111	12	5	-7	15,333	14,600	-733	65	30	-35
48	Hawaii	19	34	+15	2	2	NC	10,882	17,000	+6,118	2	2	NC
49	Rhode Island	20	12	-8	1	1	NC	18,091	16,714	-1,377	20	10	-10
50	Alaska	7	3	-4	1	0	NC	12,000	9,333	-2,667	5	1	-4
U.S. total		189,982	217,575	+27,593	9,315	9,999	+684	20,395	23,149	+2,754	57,127	37,468	-19,659

Source: February 2018 Milk Production Report, USDA
Statistical ties are represented by the same numerical ranking.

For reprints, contact Progressive Publishing at (208) 324-7513
or download the latest copies of our dairy, forage or beef stats online at progressivepublish.com/stats



www.progressivedairy.com

Jerome, ID — (800) 320-1424 or (208) 324-7513
Irvine, CA — (949) 403-6371
New Castle, PA — (724) 601-6266
Eggenston, WI — (608) 976-2580

