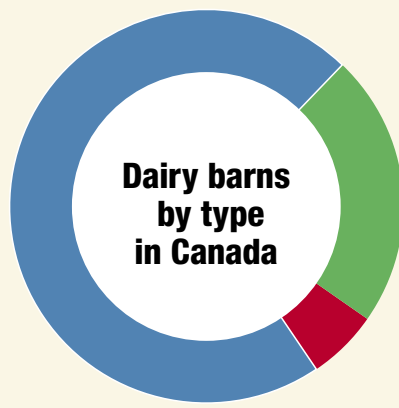
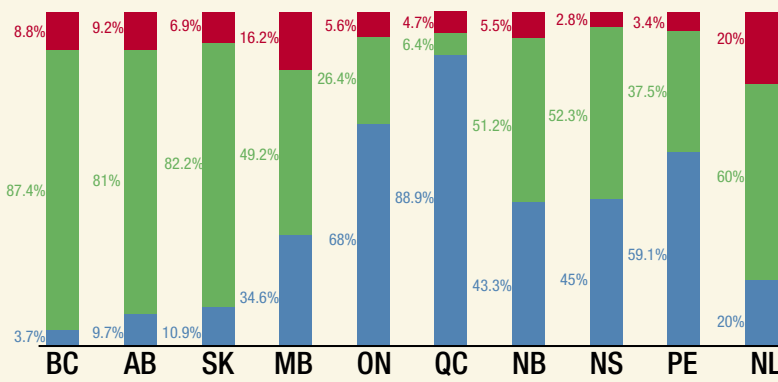


2014 Dairy barns by type



● Tiestall 71.7%
● Freestall 22.7%
● Robotic System 5.6%



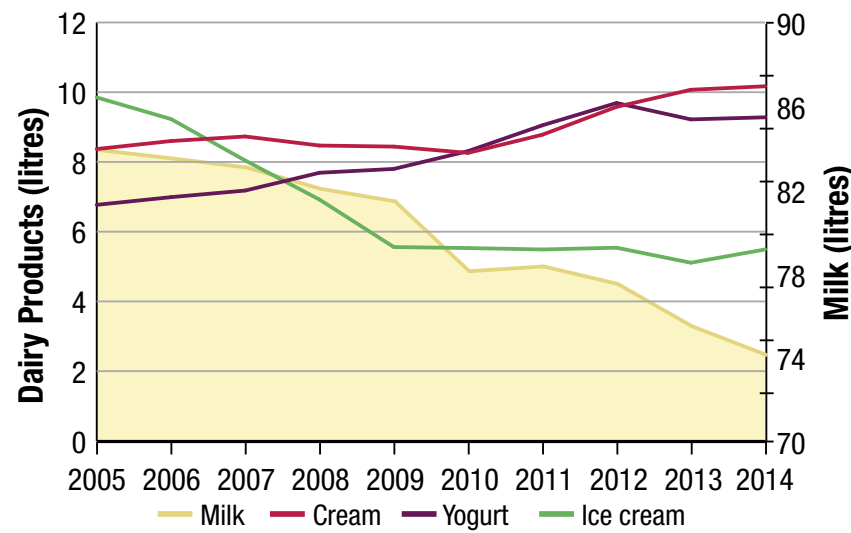
Proportion of dairy barns by type

● Tiestall ● Freestall ● Robotic System

Province	Tiestall			Freestall			Robotic System		
	Number	Increase/decrease from 2012	Herd size	Number	Increase/decrease from 2012	Herd size	Number	Increase/decrease from 2012	Herd size
British Columbia	11	-2	56.3	257	-11	163.9	26	+8	113.0
Alberta	40	-6	79.7	333	-43	148.2	38	+15	136.3
Saskatchewan	11	-3	77.2	83	0	192.8	7	+2	144.1
Manitoba	66	-15	78.3	94	0	186.5	31	+7	168.7
Ontario	1974	-170	57.4	767	-50	127.3	164	+63	101.7
Québec	4005	-145	54.6	289	-12	112.2	213	+116	98.1
New Brunswick	55	13	57.4	65	+5	117.1	7	+4	72.6
Nova Scotia	49	0	54.5	57	-7	109.1	3	+1	110.3
Prince Edward Island	52	-9	64.2	33	-3	104	3	+3	194.3
Newfoundland and Labrador	1	0	103	3	-1	161.3	1	+1	106.0

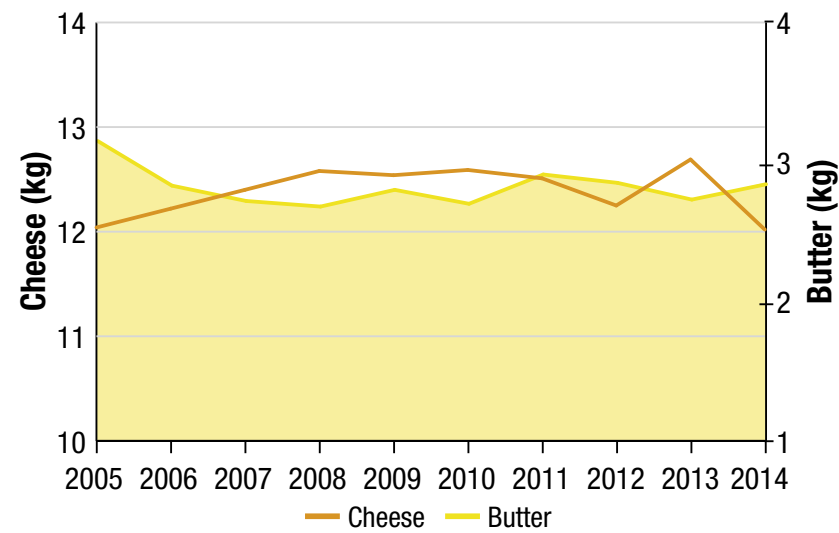
Source: Canadian Dairy Information Centre.

Per capita consumption of dairy products



Source: Statistics of the Canadian Dairy Industry – 2015 Edition by Agriculture and Agri-Food Canada.

Per capita consumption of cheese & butter



Imports, robots continue to gain ground

Progressive Dairyman Editor Karen Lee

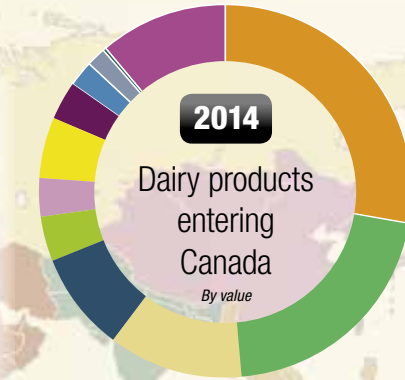
A noticeable increase in the dairy industry statistics for 2014 is the jump in imports of dairy products. Last year, 201,663 tons (\$900.1 million) of incoming dairy products far outweighed the amount of exports at 95,239 tons (\$281 million). While exports were up 7 percent from the previous year, imports grew by 19.6 percent.

Imports of dairy products have consistently been higher than exports, but thanks to the strength of the Canadian dollar last year as well as the demand for milk protein ingredients, the margin widened quite a lot compared to previous years.

Another interesting trend, which is well perceived, but actually put into numbers in this report, is the growth of robotic milking barns throughout the country. The number of farms with robotic systems neared 500 in 2014. That is up 216 percent from just four years ago.

Tiestall barns still have a good majority on the type of dairy facility found in Canada, particularly in Ontario and Quebec, whereas freestall facilities are most common in the western provinces.

Overall milk production in 2014 was up just slightly for the country. When split, the Western Milk Pool produced 2.5 percent more milk than the year before, while the P5 provinces were down 0.7 percent. **PD**



● Specialty cheese 28.2% ● Milk & cream 3.2%
● MPS 21.1% ● SMP/WMP 2.3%
● Whey 11.8% ● Cheese 1.6%
● Casein 8.8% ● Yogurt 0.4%
● NMC 4.1% ● Cheddar cheese 3.3%
● Butter 5.4% ● Other* 11.1%

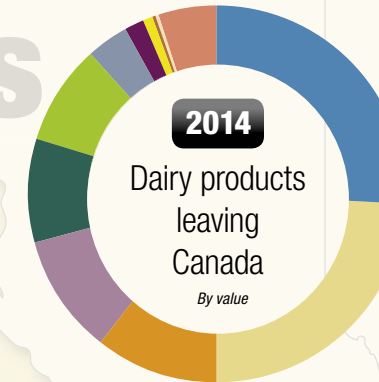
Top 10 countries selling dairy products to Canada

Rank	Country	2014 Imports (in dollars)	Percent change from 2013
1	U.S.	\$467,224,475	+24%
2	New Zealand	\$93,096,805	+87%
3	Italy	\$57,816,964	-2%
4	France	\$57,631,137	-8%
5	Germany	\$47,937,968	+27%
6	Switzerland	\$47,907,458	+37%
7	Argentina	\$24,674,266	-36%
8	Netherlands	\$18,810,848	+2%
9	Norway	\$17,404,719	+22%
10	Denmark	\$17,241,648	+17%

Exports

Top 10 countries buying Canada dairy products

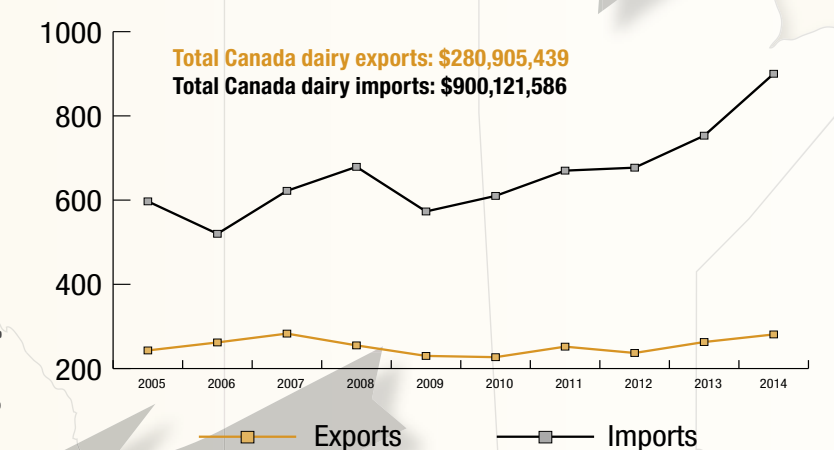
Rank	Country	2014 Exports (in dollars)	Percent change from 2013
1	U.S.	\$119,042,118	13%
2	Egypt	\$18,636,468	24%
3	Philippines	\$17,547,650	12%
4	Cuba	\$12,350,843	-9%
5	Mexico	\$12,315,869	-1%
6	Jamaica	\$11,674,957	220%
7	Saudi Arabia	\$9,842,290	-15%
8	Thailand	\$8,166,175	81%
9	South Korea	\$5,293,749	-18%
10	China	\$4,903,405	428%



● SMP/WMP 26% ● Milk & cream 1.7%
● Whey 24.3% ● Butter 0.9%
● Specialty cheese 10.7% ● Dairy Spread 0.3%
● Cheddar cheese 10.2% ● Ice Cream 0.1%
● Yogurt 9.1% ● Other* 5%
● NMC 8.4% ● Cheese 3.7%

Canada dairy exports/imports

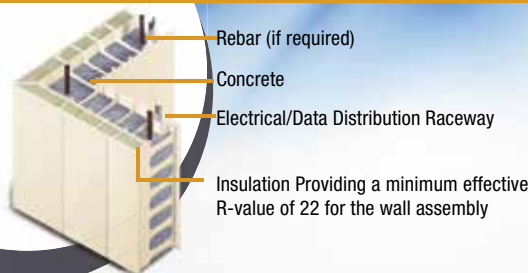
(in millions of dollars)



Source: Statistics of the Canadian Dairy Industry – 2015 Edition by Agriculture and Agri-Food Canada.



The Revolutionary Stay-in-Place Concrete Wall Formwork



- Solid concrete construction
- Quick on-site assembly
- Proven cost savings
- Unparalleled energy efficiency
- Easy to maintain
- Mold/Mildew resistant

Also featuring NURELINE for Ceiling Applications

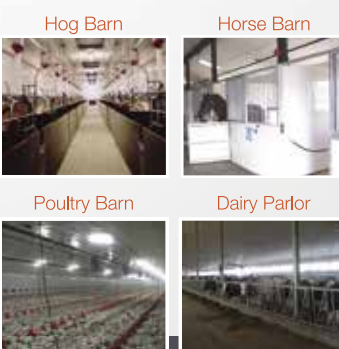


Interlocking fastener system for quick and easy installation. Heavy-duty slotted fastener leg to accommodate expansion and contraction. Concealed fasteners for a clean finish.



Nuform Building Technologies Inc.
Toll Free: 1 (877) 747-WALL (9255)
email: info@nuformdirect.com

www.nuformdirect.com



The all-new Uddermatic feeding systems introduce a revolutionary approach to feeding calves, kids and lambs. Frequent but relatively brief feedings ensure maximum benefit for livestock, all at minimal effort for the operator. Stationary units feed up to 20 calves. Track units feed up to 150 calves.

Visit www.uddermatic.ca to watch an in-depth video to learn more, as well as download a product brochure.

DEALERS

Partner Ag Services
Tara, ON 519.934.2343
info@fixfarm.ca

Optimum Agri
Belle Valle, ON 705.647.5040
mark@optimumagri.ca

Conestogo Agri Systems Inc.
Alma, ON 800.461.3022
info@conestogoagri.ca



Rick's Farm Service
Harriston, ON 519.338.5693

Meadowbrook Agri Systems
Mount Forest, ON 519.323.2405

FEED For Proven Nutrition & Profitable Performance



www.newlifemills.com

new-life mills
Feeding Your Future
A division of Parrish & Heimbecker, Limited

LEGEND SUPER BED

LEGEND RUBBER INC

- » Legend super bed features super comfort and durability
- » Lower somatic cell counts
- » Higher yields

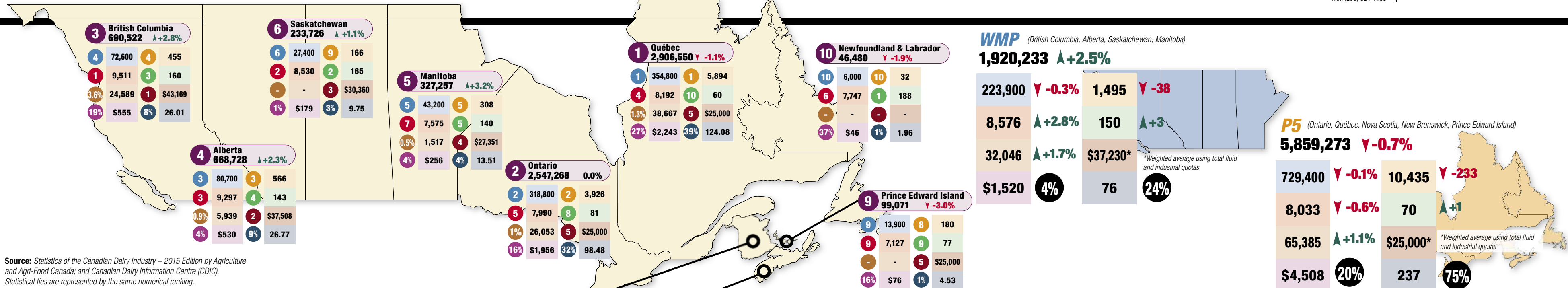
1-866-223-2256 | info@legendrubber.ca

2014 Canada dairy statistics



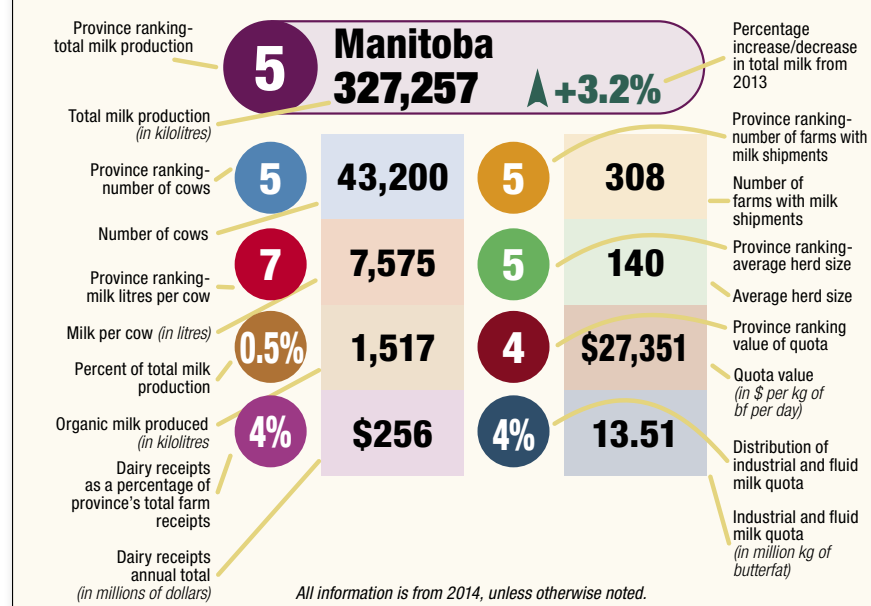
www.progressivedairy.com

PO Box 585
Jerome, ID 83338
(208) 324-7513 or (800) 320-1424
FAX: (208) 324-1133

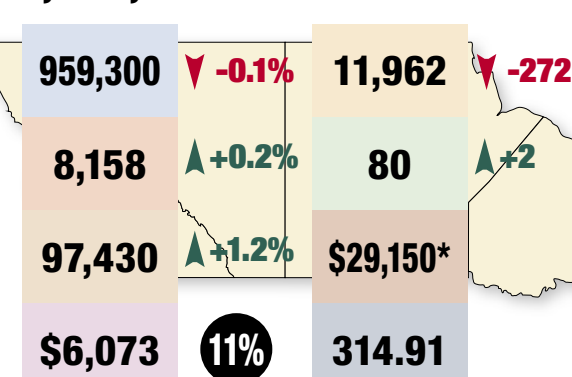


Source: Statistics of the Canadian Dairy Industry – 2015 Edition by Agriculture and Agri-Food Canada; and Canadian Dairy Information Centre (CDIC). Statistical ties are represented by the same numerical ranking.

Legend



Canada



Province total production rank	Province	Total milk production (in kilolitres)	Percentage increase/decrease in total milk from 2013	Number of cows	Percentage increase/decrease in number of cows from 2013	Milk per cow (in litres)	Percentage increase/decrease in milk per cow from 2013	Number of farms with milk shipments	Change in number of farms with milk shipments from 2013	Average herd size	Change in avg herd size
1	Quebec	2,906,550	-1.1	354,800	-0.2	8,192	-0.9	5,894	-144	60	+1
2	Ontario	2,547,268	0.0	318,800	0.1	7,990	-0.1	3,926	-71	81	+1
3	British Columbia	690,522	2.8	72,600	-0.4	9,511	3.3	455	-20	160	+6
4	Alberta	668,728	2.3	80,700	-0.1	8,287	2.4	566	-5	143	+1
5	Manitoba	327,257	3.2	43,200	-0.2	7,575	3.4	308	-13	140	+5
6	Saskatchewan	233,726	1.1	27,400	-0.7	8,530	1.8	166	0	165	-1
7	Nova Scotia	173,814	-0.1	23,000	0.0	7,557	-0.1	229	-6	100	+3
8	New Brunswick	132,570	-2.5	18,900	-1.0	7,014	-1.5	206	-5	92	+1
9	Prince Edward Island	99,071	-3.0	13,900	0.0	7,127	-3.0	180	-7	77	+3
10	Newfoundland and Labrador	46,480	-1.9	6,000	1.7	7,747	-3.5	32	-1	188	+9
CANADA TOTAL		7,825,985	0.1	959,300	-0.1	8,158	0.2	11,962	-272	80	+2

Amino Acid Formulation

The Key to Maximizing Milk Protein

- Smartamine® M
- Use high-quality ingredients to obtain the required Methionine and Lysine in your ration
- MetaSmart®



This is why.



DeLaval VMS™ Milking Robot. Your future is our why.

www.delaval.ca

Follow DeLaval on Facebook, Twitter, and YouTube.

ADISSEO is a registered trademark of Tetra Laval Holdings & Finance S.A. and DeLaval is a registered trademark of DeLaval Holding AS. © 2015 DeLaval Inc. DeLaval, 1505 Jamieson Drive, P.O. Box # 4000 Peterborough, Ontario K9J 7B1, CANADA.



Maximize milk production and profitability with DairyMax for alfalfa and corn.

Assisting the farming community in its pursuit of improved yields and quality is a privilege CanGrow doesn't take lightly. Our DairyMax corn and alfalfa programs continue to help farmers increase milk production per acre by improving plant health, vigour, tonnage and fibre digestibility,¹ resulting in higher profits per litre.

Contact CanGrow today – realize the advantage of lower production costs per litre with DairyMax – and join the growing list of CanGrow success stories.

1. Increase in NDFd of 14% (corn), and 17% (alfalfa).

CANGROW.COM

Contact us today to discuss your needs.
Toll free: 800-353-3086
Email: dairymax@cangrow.com



Adisseo
4400 North Point Pkwy, Suite 275
Alpharetta, GA 30022
800-727-1019
Fax: 678-339-1600
Email: INFO@Adisseo.com

